



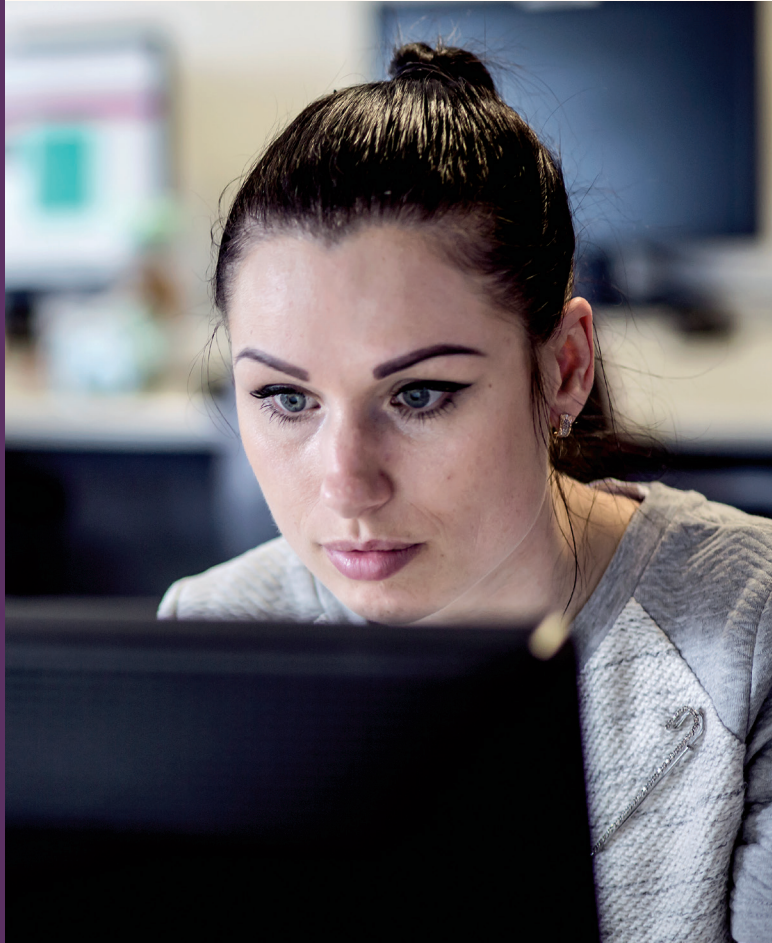
Ollscoil  
Teicneolaíochta  
an Atlantaigh

Atlantic  
Technological  
University

MSc

# Supply Chain Analytics

On-Campus Course





# What is Supply Chain Analytics

Supply chain analytics is used to identify current and predict future risks by spotting patterns and trends throughout the supply chain. Supply chain analytics can also provide real-time analysis based on interpretation of the data. In this way companies will have far broader supply chain intelligence. They can become more efficient and avoid disruptions which will in turn support improved business models.

## Is there work in this field?

One of the most popular careers in the supply chain industry is that of a supply chain analyst. Supply chain management is having ever increasing importance in overall business management. For a business to be at the top of their industry, they need specialists who have deep knowledge about the supply chain and who know how to interpret and leverage data for peak performance. This makes the position of supply chain analyst a great career choice, and it's a career choice in high demand. Companies in almost every business sector are trying to hire graduates in supply chain analytics but the supply of specially trained graduates is very limited.



## Career opportunities

The course is focused on how to make decisions about the organisation and management of the movement, transformation, and storage of flows of goods, people, data, and money as to meet certain performance criteria across a supply chain. Each module focuses on specific areas of required knowledge or skills related to this, including e.g. on the role and relationship management between various divisions in firms or with suppliers and customers, or on modelling of strategic choice or the optimisation of operational day-to-day decisions, or on computer-related knowledge

and skills for converting data into useful information for decision support. According to MarketsandMarkets.com "The global supply chain analytics market size is expected to grow from USD 3.5 billion in 2020 to USD 8.8 billion by 2025, at a Compound Annual Growth Rate (CAGR) of 19.8% during the forecast period. Learners will be equipped for roles such as: Supply chain manager, Supply chain analyst, Supply chain planner, Supply chain IT, Logistics manager, Logistics resource planner, Continuous improvement officer, Production and load analyst and Transport manager.

# Who is the programme aimed at?

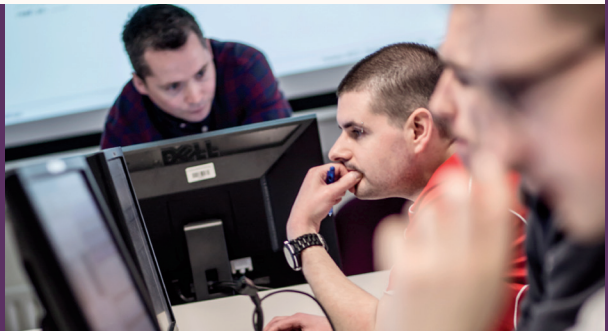
This MSc course will be of particular interest to students who wish to understand how supply chains work and to use advanced analytics techniques to extract valuable knowledge from vast amounts of data, facilitating data-driven decision-making at supply chain level. They will become part of increasingly multi skilled teams that are responsible for planning and managing large scale supply chains. The course will also be relevant to anyone with an interest in how supply chains work. Students may come for a variety of backgrounds such as Computing, Science, Engineering, Mathematics, Business and Finance. Participants registered on this programme will generally aspire to a career in the logistics/supply chain management/ analytics field.

## Table of modules

Modules	Mandatory/Elective	Credits
Supply Chain Management	Mandatory	10
Global Logistics	Mandatory	10
Operations Management	Mandatory	10
Data Modelling & Business Intelligence	Mandatory	10
Data Analytics & Visualisation	Mandatory	10
Supply Chain Analytics Project	Mandatory	10
Dissertation	Mandatory	30

## EU fees

Fees are €5,750 but full-time students may be able to apply for a scholarship to cover part of the fees.



## Minimum Entry Requirements

The programme will be available to applicants who meet the following criteria:

- An Honours Degree with first or second-class honours or an equivalent qualification in Computing, Science, Engineering, Business, Finance or Mathematics or any associated discipline.
- Candidates who do not have an Honours degree but have significant relevant experience may also be eligible for consideration via Recognition of Prior Learning (RPL).



## Registration

Registration for the programme will be in January 2023.

## 4 – key points

- Supply chain analytics provides insights into logistics performance, from inventory management to fulfilling and shipping orders.
- Supply chain analysts are involved in analysing supply chain data to make supply chains more efficient and avoid disruption.
- Applicants should have exposure to Computing, Science, Engineering, Business, Finance or Mathematics or any associated discipline.
- The programme will be of interest to graduates who aspire to a career in the logistics/supply chain management/ analytics field.

## Further Information

### Contact

Admissions office, ATU Donegal, Letterkenny Campus

E-Mail: [Admissions.Donegal@atu.ie](mailto:Admissions.Donegal@atu.ie)

Or for academic questions relating to the programme contact:

**Thomas Dowling**, Head of Department of Computing, ATU Donegal, Letterkenny Campus

E-Mail: [Thomas.Dowling@atu.ie](mailto:Thomas.Dowling@atu.ie)

The application form can be found on our website:

[www.lyit.ie/CourseDetails/D303/ATU\\_LY\\_1001/SupplyChainAnalytics](http://www.lyit.ie/CourseDetails/D303/ATU_LY_1001/SupplyChainAnalytics)

Fees for the MSc in Supply Chain Analytics are **€5,750**.

For more information on fee, grants, and scholarships go to:

[www.lyit.ie/Study-at-ATU-Donegal/Fees-Grants-Scholarships/Scholarships](http://www.lyit.ie/Study-at-ATU-Donegal/Fees-Grants-Scholarships/Scholarships)