

Computer Services

Quick Guide on How to Use the Microsoft OneDrive Cloud Storage.



Introduction

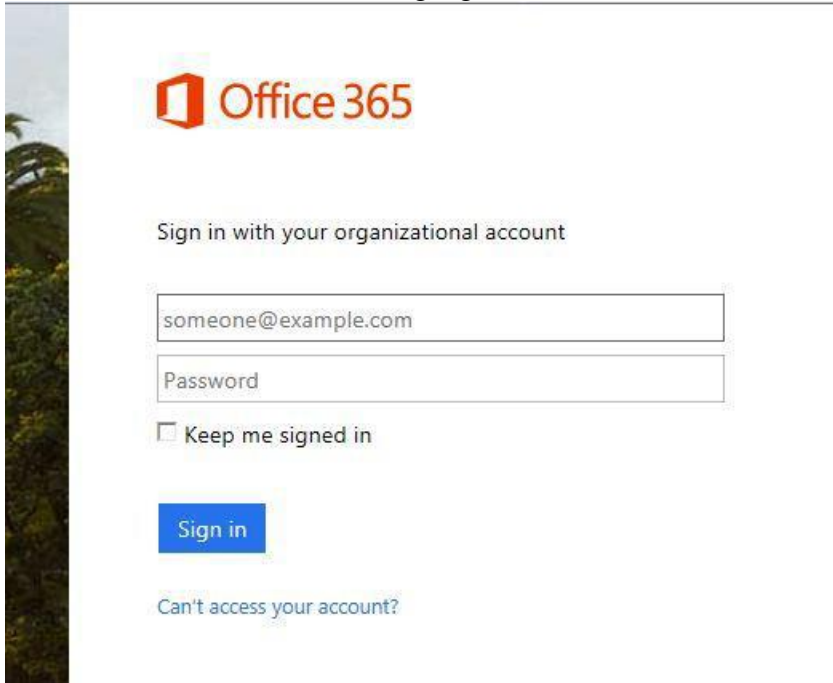
In addition to Student Email, students also have access to the Microsoft OneDrive, a cloud-based storage area. Microsoft OneDrive also offers 1TB of storage for any file type, including pictures, music, and other documents. OneDrive accounts also include access to Microsoft Office Word, Excel, PowerPoint, Excel Survey, and OneNote.

The Microsoft OneDrive account is tied to the student email account. Students can access OneDrive from any computer on or off campus, through any Internet browser. OneDrive can be downloaded onto any computing devices (PC, Laptop, Tablet, or Smartphone).

Accessing Microsoft OneDrive on an Internet browser

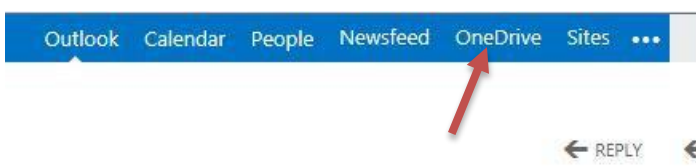
To access OneDrive:

1. Open your Internet browser and login to your LYIT Student email: The URL for student email is <https://login.microsoftonline.com> or via LYIT website <http://www.lyit.ie>
2. You should see the following sign in box:



3. Type in your Student email address, which should be: studentID@student.lyit.ie (i.e. L00123456@student.lyit.ie).
4. Type in your password.
5. Click "Sign In" to log into your account.

To access OneDrive, click on the OneDrive menu item



Below is screen presented to your when click on “OneDrive”. To perform a task click on the “new” link as per below figure.

OneDrive @ Letterkenny Institute of Technology

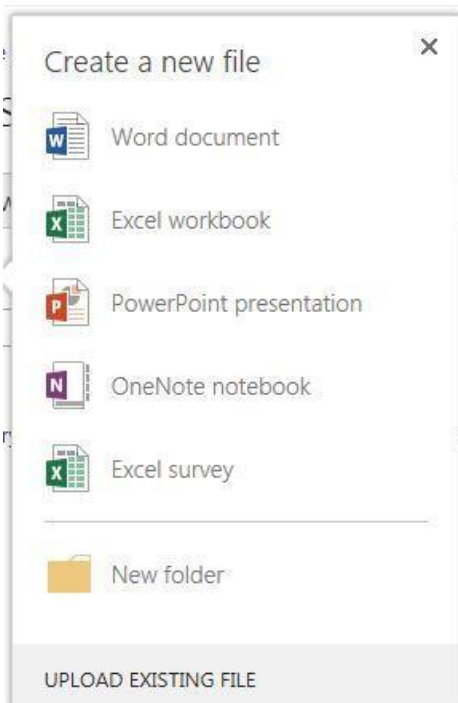
Documents

Welcome to OneDrive @ Letterkenny Institute of Technology, the place to store, sync, and share your work. Documents are private until shared. [Learn more here.](#) [Dismiss](#)

+ new ↑ upload ↻ sync ✎ edit ✎ manage ↻ share

✓	📄	Name	Modified	Sharing	Modified By	
	📁	Shared with Everyone	...	2 hours ago	👤	☐ Mc Intyre Liam (L00074295)

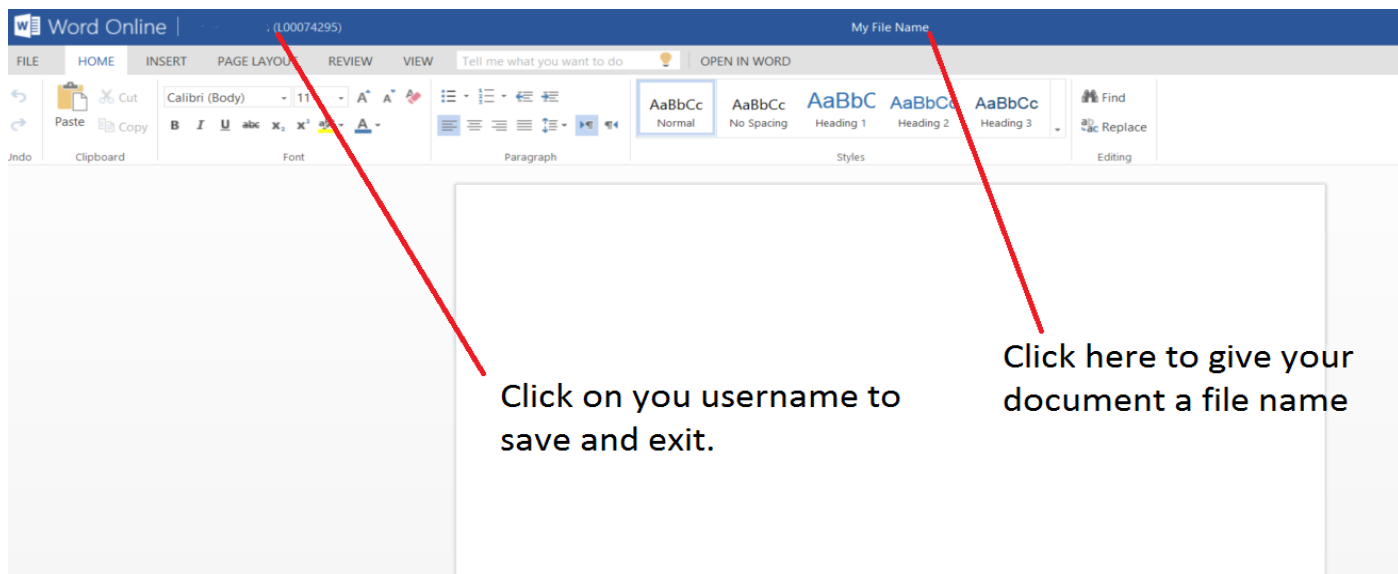
When clicking on new, the following menu will appear, click on the task that you want to perform.



Document types that you have access to are Microsoft WORD, EXCEL, POWERPOINT, and EXCEL SURVEY, as well as the OneNote collaboration tool.

Creating Microsoft Office Files (Word, Excel, PowerPoint, OneNote)

By selecting “new” as per previous figure you can then select type of file you want to create i.e. Word, Excel, PowerPoint, or OneNote. Figure below shows how you name your Microsoft office files and save & exit from any online Microsoft Office application.

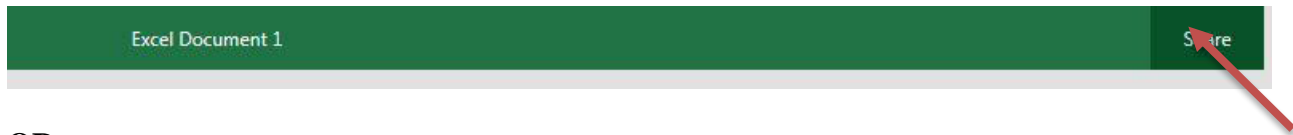


Note: You can give your document a name my clicking on the center as shown in the above figure – this applies to Excel and PowerPoint as well. The only way to exit Word, Excel, PowerPoint or OneNote is click on your user login name as per above figure.

Sharing Documents with others

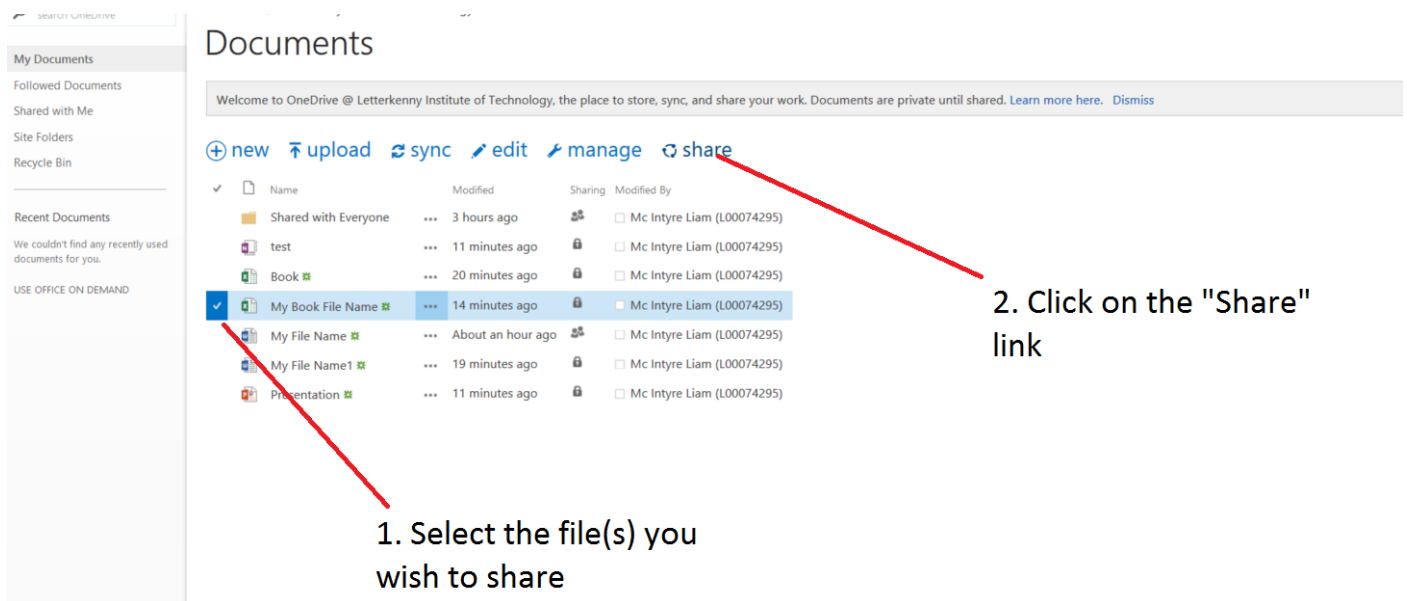
You can SHARE your files or folders, which will allow you to collaborate with other students on the Microsoft Email. For example, if you are working as a group of students on a single PowerPoint presentation as a team, sharing that document among the team will allow any of those team members to modify the document, and all will see the changes.

Simply click on the SHARE option on the top menu bar



OR

You can use the SHARE option in dashboard as per below figure.



Then the following screen will appear – requesting email addresses of who you wish to share your file(s) or folder(s) with. That student will receive an invitation to shared document and the document will appear in their OneDrive folder.

The image shows a OneDrive interface with a 'Share' dialog box open for a file named 'My Book File Name'. The dialog box has a title bar 'Share 'My Book File Name'' and a close button. Below the title bar, it says 'Only shared with you'. There are three main sections: 'Invite people' with a text input field containing 'I00012345@student.lyit.ie' and a dropdown menu showing 'Can edit', 'Can edit', and 'Can view'; 'Get a link' with a text input field containing 'Please review my File'; and 'Shared with you' with a text input field. Below these sections, there are checkboxes for 'Require sign-in' (checked) and 'Send an email invitation' (checked). At the bottom right, there are 'Share' and 'Cancel' buttons. Red arrows point from text annotations to these elements: one from '1. Enter the email address you wish to your file(s) or folder(s)' to the email input field; one from '2. If you them to edit or view' to the dropdown menu; one from '3. Enter details (optional)' to the 'Please review my File' text input field; and one from '4. Click on "Share" button.' to the 'Share' button.

Welcome to OneDrive @ Letterkenny Institute of Technology, the place to store, sync, and share your work. Documents are private until shared. [Learn more here.](#) Dismiss

new upload sync

Share 'My Book File Name'

Only shared with you

Invite people

I00012345@student.lyit.ie

Can edit
Can edit
Can view

Get a link

Please review my File

Shared with you

Require sign-in

HIDE OPTIONS

Send an email invitation

Share Cancel

1. Enter the email address you wish to your file(s) or folder(s)

2. If you them to edit or view

3. Enter details (optional)

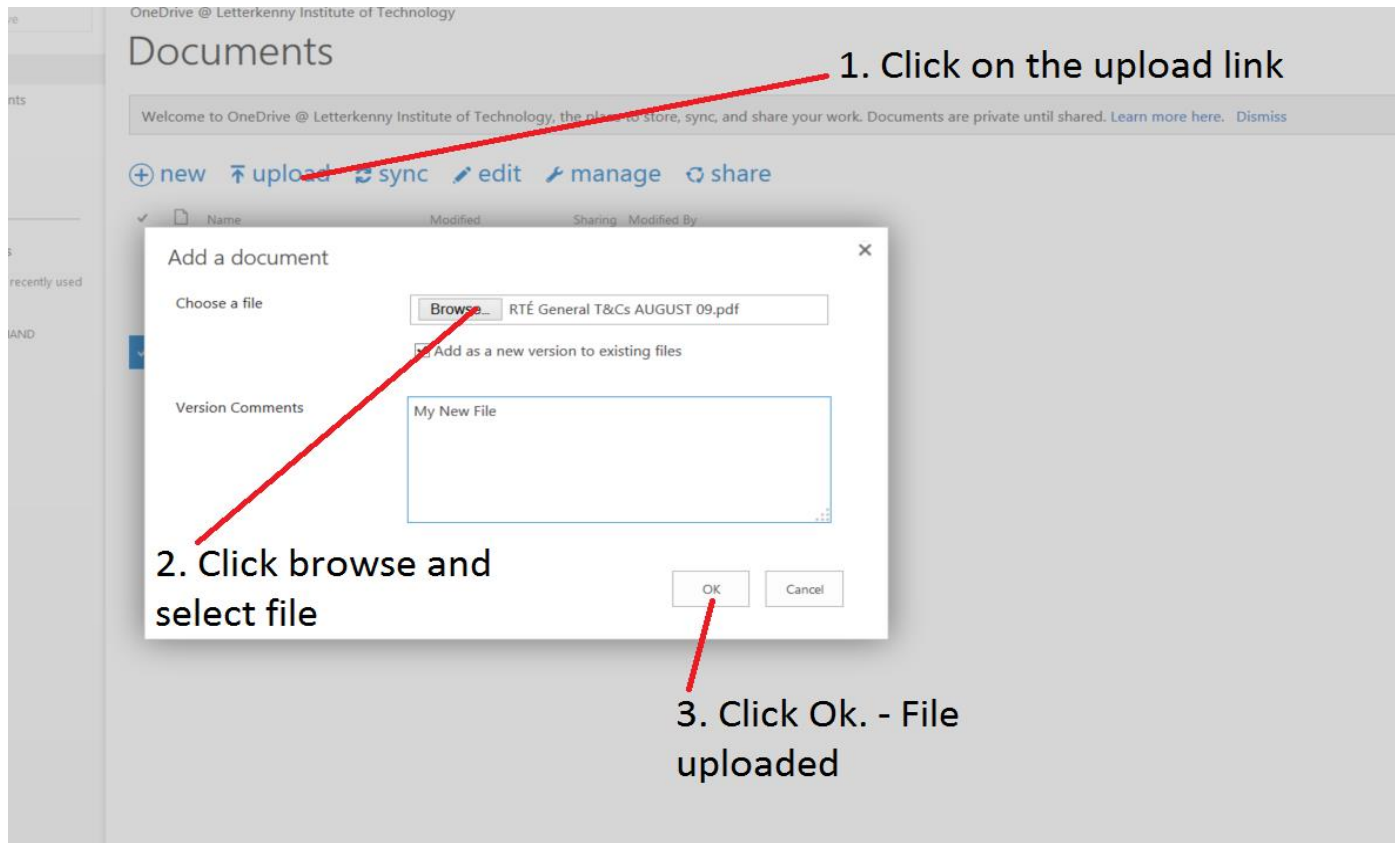
4. Click on "Share" button.

Uploading Files to OneDrive

OneDrive supports drag & drop i.e. you can drag a file from your desktop into OneDrive and vice & versa.

OR

You can use the upload button as per below figure.



Managing Files in OneDrive

You can perform various management tasks against your folder or files by selecting the file(s) or folder(s) and click on manage as per below figure. You can then choose what action you want to do i.e. delete file or folder.

Welcome to OneDrive @ Letterkenny Institute of Technology, the place to store, sync, and share your work.

+ new ↑ upload ↻ sync ✎ edit ↗ manage ↻ share

✓	📄	Name	...	Modified	By
	📁	Shared with Everyone	...	3 hours ago	
	📄	test	...	11 minutes ago	tyre Liam (L00074295)
	📄	Book 🌿	...	20 minutes ago	tyre Liam (L00074295)
✓	📄	My Book File Name 🌿	...	14 minutes ago	tyre Liam (L00074295)
	📄	My File Name 🌿	...	About an hour	tyre Liam (L00074295)
	📄	My File Name1 🌿	...	19 minutes ago	tyre Liam (L00074295)
	📄	Presentation 🌿	...	11 minutes ago	tyre Liam (L00074295)

1. Select file or folder to manage

2. Click on manage

3. Choose your action

- View Properties
- Edit Properties
- View in Browser
- Edit in Browser
- Check Out
- Version History
- Workflows
- Download a Copy
- Follow
- Shared With
- Delete