

# Computer Services

## Quick Guide on How to Connect to Wi-Fi



## Microsoft Windows 10, 8, 8.1

- Select **eduroam** from the available Wi-Fi networks in the bottom right hand corner.
- Enter your LYIT username and domain name, e.g. L00123456@student.lyit.ie, and your logon password.
- Choose **Connect**

*Tip: If it does not work, try again, but make sure you forget network before starting again*

## Microsoft Windows 7

- In the start menu type **Manage wireless networks** and **select**.
- Choose Add and **Manually create a network profile**.
- Enter the network name as **eduroam** and choose security type as **WPA2-Enterprise**.
- Click **Next** and **Change connection settings**.
- Select the **security** tab and choose the **settings** button
- Untick **Validate server certificate**.
- Under **Select Authentication method** choose **Configure**.
- Untick Automatically use my Windows... and click OK.
- Click **OK** and **OK** again
- Click **Advanced settings**.
- Select **Specify Authentication mode** and select **User Authentication**.
- Enter your LYIT username and domain name, e.g. L00123456@student.lyit.ie, and your logon password.

*Tip: If it does not work, try again, but make sure you forget network before starting again.*

## MacOSX 10.13 10.14

- Select **eduroam** from the available Wi-Fi networks
- Ensure Mode is set to Automatic
- Enter your LYIT username and domain name, e.g. L00123456@student.lyit.ie, and your logon password.
- Choose **Connect**.

*Tip: If it does not work, try again, but make sure you to forget network before starting again*

## Apple iPhone and iPad

- Select **eduroam** from the available Wi-Fi networks in settings.
- Enter your LYIT username and domain name, e.g. L00123456@student.lyit.ie, and your logon password.
- Choose **Connect**.

*Tip: If it does not work, try again, but make sure you to forget network before starting again*

## Android

- Go to Wi-Fi settings and select **eduroam**.
- Set **EAP** method as **PEAP** .
- Set Phase 2 authentication to **MSCHAPV2**. \*
- CA certificate – Do not validate or none \*
- Enter your LYIT username and domain name, e.g. L00123456@student.lyit.ie, and your logon password.
- Leave Anonymous Identity blank.

\*On some versions of Android you may need to go to “Advanced Settings” to see these settings.

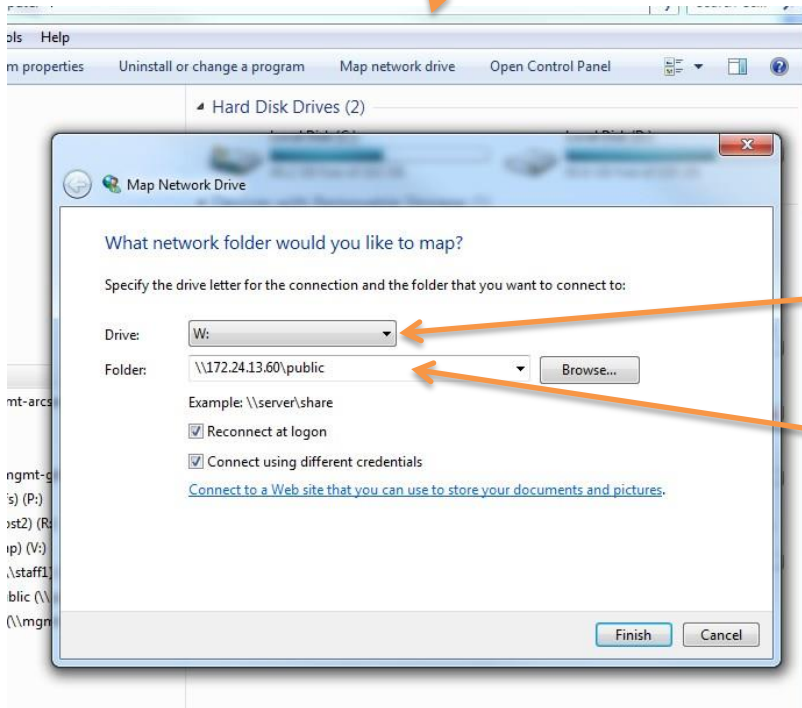
**Tip:** *If it does not work, try again, but make sure you to forget network before starting again*

*If you are still having trouble connecting your device you can use the eduroam Configuration Assistant tool, this can be accessed here: <http://cat.eduroam.org>*

## To access the Y: Drive on wireless (Windows Systems)

### To map the public folders...

1. Go to My Computer ... Map Network Folder



Choose whichever drive letter you want eg Y

In the folder box type the following:  
`\\172.24.13.60\PUBLIC`

Tick up the Reconnect at logon box

Tick up Connect using a different credentials

enter **your** student username and password as shown in the box (put lyitnet\ in front of your username)

Example: \\server\share

Reconnect at logon

Connect using different credentials

[Connect to a Web site that you can use to store your documents and pictures.](#)



**You are now connected to the Staff Public Folders.  
(This is only accessible within the college)**